

Virtual Subject Advisory Groups

The JISC consulted widely in the education sector and the message received was that a good way to improve the JISC's collection building activities would be to establish subject based advisory groups.

The groups are made up of members of the JISC community with subject expertise and provide the JISC Collections Team with advice on the electronic resources it is considering. They also comment on gaps in coverage and issues such as pricing, licensing, functionality and to help build a rounded picture of the issues that the Collections Team should bring to publishers attention in our discussions with them.

The groups will be informal in nature and it is intended that they will not require a major investment of time on the part of the group members.

What are the Subject Areas covered?

The Virtual Subject Advisory Groups will be composed according to the 8 broad subject areas used by the Resource Discovery Network:

- Arts and Creative Industries
- Engineering, Mathematics and Computing
- Geography and Environment
- Health, Medicine and Life Sciences
- Hospitality, Leisure, Sport and Tourism
- Humanities
- Physical Sciences
- Social Science, Business and Law

There are discussion lists for each of the groups at the web pages above and members will be notified by JISCmail when a new discussion topic has opened.

The outcome of discussions will be collated and made available on the Previous Discussion Topics page:

If you would like to take part in the Virtual Subject Advisory Groups please contact Liam Earney, JISC Collections Manager at learney@jisc.ac.uk (Tel: 020 7848 1716)

Forthcoming Workshops at the RSC

20 & 21 April 2005	Virtual Private Networks
25, 26 & 27 April 2005	Linux Fundamentals Course (3 day)
10 May 2005	Making Moving Images Work
18 May 2005 & 6 June 2005	Making the Most of Microsoft (Creative Industries)
19 May 2005	Teaching with a Whiteboard
24 May 2005	Information skills: is Google enough?
25 May 2005	Train the Trainer
1 June & 2 June 2005	Microsoft Active Directory
7 June 2005	Content Solutions for E-Learning
8 June 2005	Assessment & Communication with E-Learning
13 June 2005	"Abracadabra" - Using courseGenie
23 August 2005	Sharepoint

In Support of SQA E-Qualifications

Newsletter readers will already be familiar with the popular Netskills courses delivered at the RSC. Now as a result of work between the RSC, University of Newcastle and SQA, successful attendees will soon be able to obtain credit towards their SQA E-Learning or E-Assessment Diploma.

For further details contact:
m.wallace@rsc-sw-scotland.ac.uk

**COMMENTS? IDEAS? REQUIREMENTS?
LET US KNOW!
IF YOU WOULD LIKE TO PRESENT AN IDEA IN
THIS NEWSLETTER, PLEASE CONTACT US ON
0141 585 0022 OR
SUPPORT@RSC-SW-SCOTLAND.AC.UK**

**JISC Regional Support Centre
Scotland South & West**
1 Todd Campus
West of Scotland Science Park
Glasgow G20 0XA
Telephone: 0141 585 0022/23
Fax: 0141 585 0020
Email: support@rsc-sw-scotland.ac.uk
www.rsc-sw-scotland.ac.uk

In ConTact

In ConTact

the newsletter of the RSC Scotland South & West - Issue 6 - Spring 2005

JISC regional support centre

Scotland south & west
Supporting the use of ICT in teaching & learning



In this Issue:

•RSC on the move

•Meet Our New Staff

•Review of Current Staff Activities

•eMerge Staff Development programme

•Virtual Subject Advisory Groups

•In Support of SQA E-Qualifications

•Forthcoming Workshops

RSC on the move!

Well quite literally! 2005 certainly has seen an explosion of activity in the RSC. Firstly we have moved to new premises.

Following a need to expand its offices to accommodate three new staff, the RSC has moved from its original location at North Glasgow College to 1 Todd Campus, Acre Road, West of Scotland Science Park. We are grateful to Ronnie Knox and his staff at North Glasgow for their steadfast support in our formative years.



Thanks to ESF Objective 3 funding, we also have three new staff to help us meet the needs of our colleges as they take forward their ICT strategic and operational plans.

Formerly known as "The Cisco Kid" of the Paisley University Regional Cisco Academy, Theresa Duffy joins us as our VLE Support Officer and HE Co-ordinator. Theresa will soon be offering support to practitioners in the use of their VLE.

Margaret McKay joins us from Glasgow Metropolitan College as our Accessibility Officer, to ensure all our delivery training activities and services are fully supported in terms of inclusivity. Margaret will also liaise with the other agencies which support the wider inclusivity agenda including BRITE, SFEU and TechDis.

Margaret Wallace joins us from James Watt College as our e-Content and Resources officer. Formerly a senior lecturer in computing, Margaret is well placed to assist staff in the sourcing and incorporation of "e" content such as JISC, NLN, COLEG, content into their curricula. She will also use a version of the Ferl Practitioners Programme (FPP) which the RSC intends to offer as one day workshops for each strand of the programme.

We have also been heavily involved in delivering our components of the National Staff Development programme "eMerge." Various strands of the programme have been delivered to around 500 staff at time of writing, including BOM/SMT, curricular staff, technical staff, LRC staff, and mixed groups. Our project based training continues to receive excellent evaluations from participants, and is likely to form the basis of future RSC training provision.

We are also developing a simple training needs analysis for all staff groups within colleges, with a view to assisting colleagues incorporate ICT into deliveries in line with the reviewed HNI inspection regime. The emphasis of this methodology is to provide a "snapshot" of needs for individual colleges, which will be supported by appropriate training designed and/or sourced by RSC staff. Following piloting, this methodology will be made available to all colleges in our area completely free of charge.

In collaboration with RSC North & East and SCROLLA, a training needs analysis - HETNA - produced by this partnership for H.E has just been released by the Funding Council to that sector.

So as you can see, we have been busy, and we look forward to supporting our institutions with our expanded staffing, innovative training approaches and most important of all - your collaboration.

Charles Sweeney
Manager



Meet Our New Staff



Theresa Duffy

Theresa Duffy joins us as our VLE Support Officer and HE Co-ordinator. After selling her manufacturing business in 1994, Theresa returned to education and graduated with an MSc in Business IT from the University of Paisley. It was not long before she returned to work at the University, firstly as a part-time IT lecturer and then for the past 5 years she has been the Business Development Manager for the IT Academy of The University of Paisley. In addition to managing the highly successful Training for Work Programme, Theresa was also responsible for managing both the Regional Cisco Academy and the Microsoft Professional Academy. Theresa is currently visiting all the FE and HE institutions in RSC SW Scotland's remit and will soon be offering hands on workshops and support to practitioners to encourage uptake and usage of their VLE.



Margaret McKay

Margaret graduated as an Occupational Therapist in 1985. During her 10 year clinical career she worked with Argyll and Clyde, Lanarkshire and Greater Glasgow Health Boards providing vocational rehabilitation services for people returning to education and employment after periods of ill health. Since 1995, she worked at the Glasgow College of Building and Printing (now Glasgow Metropolitan College) as Extended Learning Support Co-ordinator. As senior lecturer, she worked with college staff in promoting access and inclusion across the college. During her secondment at JISC RSC, Margaret will work alongside other JISC RSC staff to deliver support and training in areas of inclusive design and assistive technologies within the JISC e-learning core remit.



Kirsty Menzies

Kirsty Menzies, our Information & Administration Officer, joined the RSC in October 2004, having just completed an MSc in Information and Library Studies at Strathclyde University. Before that, Kirsty spent 8 years as Administration and Technical Officer for Science and Plants for Schools, where she helped to develop exciting practical experiments (that worked!) and provide hands-on training for Biology Teachers and Technicians. In addition to her information and administration skills, Kirsty's degree in Horticulture has proved useful in caring for the office plants.



Margaret Wallace

After graduating with a business degree in 1993, Margaret began her teaching career at Heriot-Watt University and Lauder College before joining an IT support consultancy based in Edinburgh, where she gained valuable experience assisting clients' with their strategic ICT developments. This was put to good use in her role as ICT Support Manager within NHS Scotland before joining James Watt College on 1998 as a Senior Lecturer in Computing. Within the college Margaret has taught on a variety of programmes moving to the business faculty in 2001 where she became responsible for e-business qualifications. During this time she also participated in a number of sector-wide e-learning projects. Since gaining a Masters in IT law from Strathclyde University in 2004 she has published articles around the area of IP and e-learning. Margaret is currently visiting and consulting with colleges and will soon be delivering workshops and providing on-going support with e-resources and design for teaching.

The arrival of our new staff has resulted in our review of current staff activities and these are summarised for the entire RSC as follows:

- Fionnuala Carmichael – Training and events organiser, who leads on design of training opportunities with other RSC colleagues. She also Co-implements RSC planning.
- Theresa Duffy – providing support in the use of VLEs and highlighting best practice in "e" pedagogy and blended learning.
- Margaret McKay – Ensuring accessibility is incorporated into all RSC training and deliveries. Incorporation of assistive technologies into all staff groups activities as appropriate.
- Joan Walker – Leads on design and delivery of curricular ICT integration methodologies and delivery of pedagogic training events. Joan also assists with RSC planning.
- Margaret Wallace – Supporting FPP and NLN resources, supporting the pedagogy of "e" learning and assisting staff plan and incorporate e-content into their deliveries.
- Andy Wishart – Provides assessment of technical staff training needs, sourcing appropriate trainers and supporting technical staff/issues in colleges.

eMerge Staff Development Programme



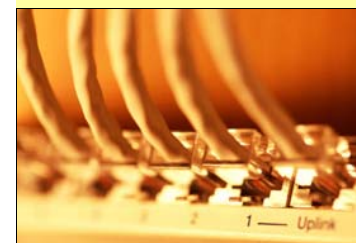
As part of eMerge: a programme of E-learning staff development for Scotland's colleges, funded by the SFEFC, the JISC RSC Scotland South and West has developed a staff development programme which aims to provide training opportunities for all staff groups within Scottish FE. The training needs of five staff groups, (senior managers, lecturers, technical, learning resources and administration and support) were identified through ETNA (Enhanced Training Needs Analysis) (2003) and the eMerge Programme has been designed to provide staff development opportunities for each of these staff cohorts.

The programme has been running since January 2004 and has included both face to face and project-based training opportunities organised under five strands.

- Strand 1 - Strategic Seminars for SMT/Boards of Management
- Strand 2 - Technical training
- Strand 3 - Training for Lecturers
- Strand 4 - Training for LRC staff
- Strand 5 - Training for Range of Staff

Technical Training

eMerge funding has enabled the RSC to offer a wide range of technical training for college staff at heavily subsidised rates. Workshops have been over subscribed reflecting the need for affordable training for network staff in colleges. Topics covered have included: Firewall, Linux, Voice over IP and VPN workshops.



Training for Lecturers

As well as a range of face to face workshops, we have enhanced our training provision to include project-based training. This approach was developed as a result of feedback from ETNA, course evaluation and college staff, which indicated that often staff do not always have the opportunity to reinforce the skills acquired during traditional face to face training. The project based approach allows for this, as well as having the added benefit of developing learning materials that can be shared.

Projects have been both centrally scoped (Curriculum Mapping) and college scoped. Five college projects have been completed with three currently underway.

Curriculum Mapping Project



This project involved training in the sourcing and evaluation of relevant electronic content and the production of interactive resource guides for the selected units. Over 120 units have now been mapped and are available from:

<http://www.rsc-sw-scotland.ac.uk/mapping.htm>

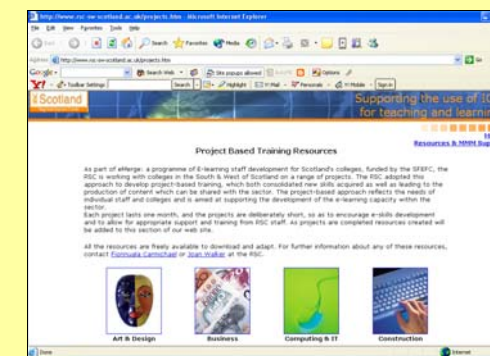
College Projects

The project based training initiative in colleges focuses on building on an individual's existing skills and providing them with the time needed to consolidate the training. During the project based training, participants are able to create interactive teaching material relevant to their own curriculum areas that incorporate new techniques in a meaningful way. Resources created during the projects are freely available to all colleges and can be viewed and downloaded from the RSC's web site at:

<http://www.rsc-sw-scotland.ac.uk/projects.htm>

Resources are available in the following curricular areas:

Art & Design Business - Computing & IT - Construction - Core Skills - Health & Safety - Health & Social Care - Learning Support - Physical Sciences - Social Sciences - Sport & Fitness



Training for Learning Resources Staff

The RSC S&W in collaboration with RSC N&E and SFEU has planned a joint programme of integrated events, tools and projects covering issues concerning electronic learning resources, under the themes of Organisation, Access, Storage, Integration and Sharing (OASIS). Events have included LOM (Learning Object Metadata) cataloguing and 'In need of refreshment? Making the most of your library management system: an introduction to Horizon'.



Further information about forthcoming eMerge workshops can be found on our training pages at:

<http://www.rsc-sw-scotland.ac.uk/events.htm>