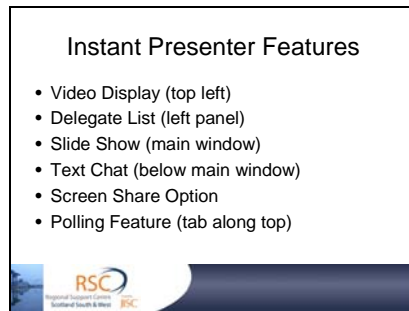


Slide 1



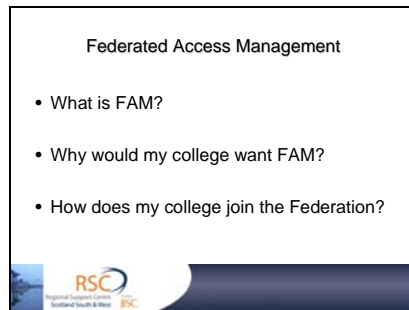
RSCtv 6th November 2007
Mark Clark, Federated Access
Management

Slide 2



First of all can you please make sure you are not running any other applications other than your browser as this can have an adverse effect in the performance of your desktop machine.

Slide 3




What I hope to do is answer 3 questions.
What is FAM?
Why would my college want FAM?
And How do I join the federation.

Slide 4

Federated Access Management

- What is this federation?
 - The UK Access Management Federation
 - Supported by JISC and BECTA
 - Operated by JANET(uk) (UKERNA)
 - Provides a single solution to access online resources and services for education & research



What is this Federation?

The UK Access Management Federation is the concept of different service providers and consumers agreeing to cooperate to simplify the user experience. Financed by JISC & BECTA although it's managed by JANET(uk)

It's aim is to provide a single national solution, managing the access of learning materials and services wither internal to an organisation or external.

Slide 5

Federated Access Management

- What does it do?
 - Brings together
 - Identity Providers (Colleges & Universities)
 - Service Providers (Publishers, learning material providers)



What does it do?


By brining together identity providers and Service providers it promotes the culture of trust between the two.

Electronic Material providers have to trust identity providers that the users they have authenticated are truly who they say they are. And with this trust providers authorise access to materials in accordance to the attributes that ID providers posses in accordance with any licence or subscriptions they may have.

Slide 6

Federated Access Management

- Why should Colleges Join?
 - Current Athens service funding ends (August 2008)
 - Greater access to national repositories
 - Access to both internal and external services
 - Better & simpler service offered to users
 - Encourages greater use of subscribed services
 - Reduced support costs



The current Athens service will no longer be funded beyond July 2008 so colleges will have to decide what to do to continue accessing external materials such as scorn and NLN etc.

Provides a single solution that allows access to both internal services and external materials. Reduces barriers to resources encouraging greater use of resources.

Simplifies identity management leads to reduces management costs.

Slide 7

Federated Access Management

- How do Colleges Join?
 - **Apply for JISC Support**
 - <http://www.jisc.ac.uk/federation.html>
 - **Apply to the UK Federation** (Snr Management)
 - <http://www.ukfederation.org.uk/content/Documents/ApplyforMembership>




References to documentation, a what you need to know..

Slide 8

Federated Access Management

- How do Colleges Join?
 - Choose 1 of three solutions
 - 1 Outsource IdP (OpenAthens)
 - 2 In-house (Shibboleth etc)
 - 3 Blended approach (Assisted)




Outsource: Eduserv OpenAthens
In house: Shibboleth on windows project, Shibboleth on Linux ect
Blended Approach: JISC Support

Slide 9

Federated Access Management

- **Resources, assistance & events**
 - Eduserv (out source provider)
 - JISC (Assisted)
 - JANET FAM Briefing; Scotland Feb 2008
 - Netskills; FAM core technical skills (Shibboleth on Linux)
 - (RSC SW Scotland, Todd Campus)
 - Tuesday 27 – Thursday 29 November 2007 (3 days)



Resources you can find from the RSC website: www.rsc-sw-scotland.ac.uk in the FAM area under Technical